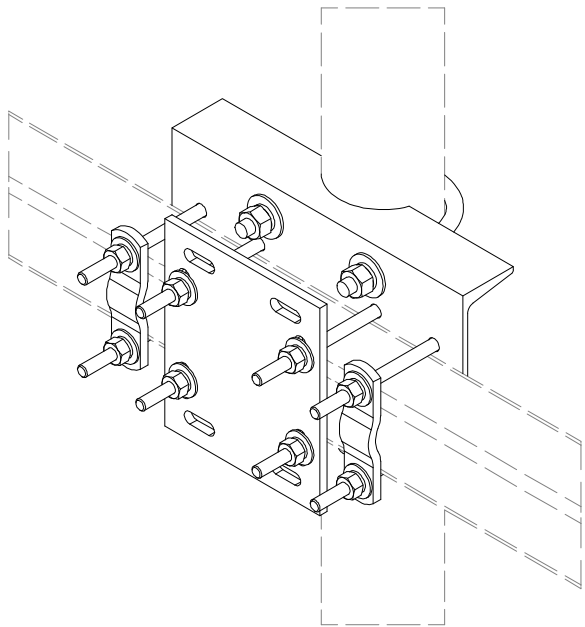


PARTS LIST						
ITEM	QTY	PART NO.	PART DESCRIPTION	LENGTH	UNIT WT.	NET WT.
1	1	X-SP216	LARGE SUPPORT CROSS PLATE		22.08	22.08
2	1	SCX3	CROSSOVER PLATE	9 1/4 in	7.19	7.19
3	2	X-100064	CLAMP (4" V-CLAMP) GALVANIZED		0.92	1.84
4	2	X-115765	5" V-CLAMP	7 1/16 in	1.03	2.05
5	2	X-UB5458	5/8" X 4-5/8" X 7" X 3" U-BOLT (HDG.)		1.54	3.07
6	4	G58FW	5/8" HDG USS FLATWASHER	1/8 in	0.07	0.28
7	4	G58LW	5/8" HDG LOCKWASHER		0.03	0.10
8	4	G58NUT	5/8" HDG HEAVY 2H HEX NUT		0.13	0.52
9	12	G12065	1/2" x 6-1/2" HDG HEX BOLT GR5 FULL THREAD	5 1/2 in	0.41	4.91
10	24	G12FW	1/2" HDG USS FLATWASHER	3/32 in	0.03	0.82
11	12	G12LW	1/2" HDG LOCKWASHER	1/8 in	0.01	0.17
12	12	G12NUT	1/2" HDG HEAVY 2H HEX NUT		0.07	0.86
					TOTAL WT. #	43.89



NO MOUNT PIPE VIEW

TOLERANCE NOTES

TOLERANCES ON DIMENSIONS, UNLESS OTHERWISE NOTED ARE:
SAWED, SHEARED AND GAS CUT EDGES (± 0.030")
DRILLED AND GAS CUT HOLES (± 0.030") - NO CONING OF HOLES
LASER CUT EDGES AND HOLES (± 0.010") - NO CONING OF HOLES
BENDS AND ANGLES ARE ± 1/2 DEGREE
ALL OTHER MACHINING (± 0.030")
ALL OTHER ASSEMBLY (± 0.060")

PROPRIETARY NOTE:
THE DATA AND TECHNIQUES CONTAINED IN THIS DRAWING ARE PROPRIETARY INFORMATION OF VALMONT INDUSTRIES AND CONSIDERED A TRADE SECRET. ANY USE OR DISCLOSURE WITHOUT THE CONSENT OF VALMONT INDUSTRIES IS STRICTLY PROHIBITED.

DESCRIPTION
PIPE SUPPORT CROSS PLATE CENTER KIT

CPD NO.		DRAWN BY CMFL 7/15/2021		ENG. APPROVAL	
CLASS 87	SUB 02	DRAWING USAGE CUSTOMER		CHECKED BY	



Engineering
Support Team:
1-888-753-7446

Locations:
New York, NY
Atlanta, GA
Los Angeles, CA
Plymouth, IN
Salem, OR
Dallas, TX
Tampa, FL

PART NO.	SP216-CK
DWG. NO.	SP216-CK